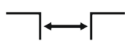




Top
mounted



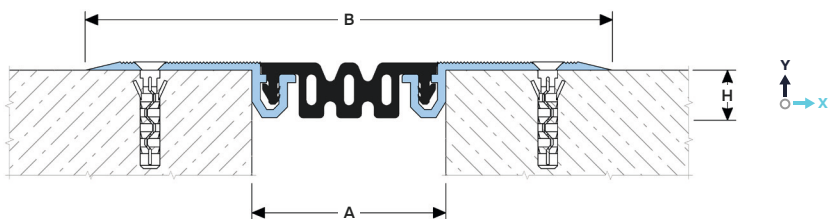
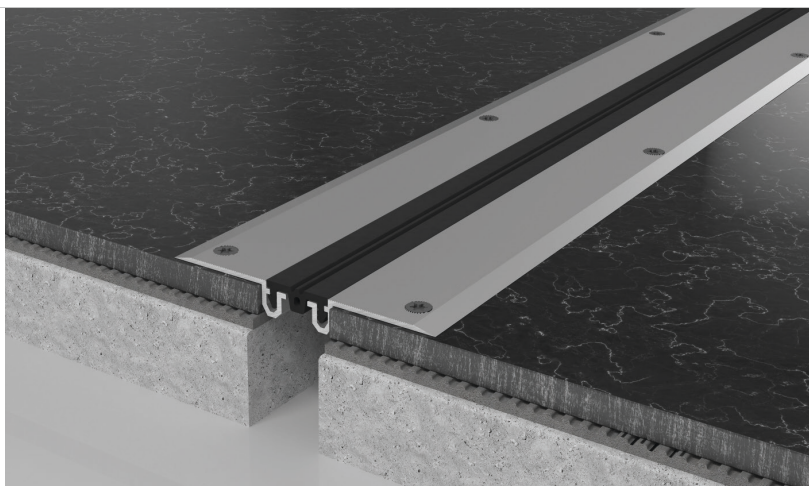
Joint width
25-100 mm



Movements
in 6 planes



Indoor/
outdoor¹



DESIGNATIONS:

A – nominal joint width;
B – visible width;
H – installation depth;

M_x – horizontal movements;
 M_y – vertical movements.

| Profile | Sizes, mm | | | Movements, mm | | Permissible loads (kN) |
|-----------|-----------|-----|----|---------------|--------------|-------------------------|
| | A | B | H | M_x | M_y | |
| SV 24/24 | 24 | 105 | 12 | 4 (+2/-2) | 4 (+2/-2) | pedestrian ² |
| SV 24/30 | 30 | 110 | 12 | 6 (+3/-3) | 6 (+3/-3) | pedestrian ² |
| SV 24/35 | 35 | 115 | 12 | 10 (+5/-5) | 10 (+5/-5) | pedestrian ² |
| SV 24/45 | 45 | 125 | 12 | 12 (+6/-6) | 12 (+6/-6) | pedestrian ² |
| SV 24/50 | 50 | 130 | 12 | 16 (+8/-8) | 16 (+8/-8) | pedestrian ² |
| SV 24/55 | 55 | 135 | 12 | 20 (+10/-10) | 20 (+10/-10) | pedestrian ² |
| SV 24/70 | 70 | 150 | 12 | 24 (+10/-14) | 24 (+12/-12) | pedestrian ² |
| SV 24/100 | 100 | 180 | 12 | 30 (+14/-16) | 30 (+15/-15) | pedestrian ² |

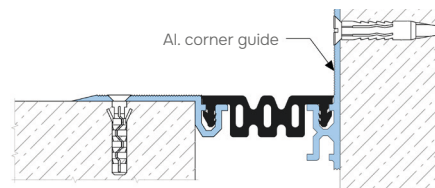
¹It is not recommended to use the profile in open sunlight and with possible large temperature fluctuations due to the large difference in the thermal expansion coefficients of concrete and aluminium.

²Automobile and other loads as agreed.

► CORNER VERSION

The profiles have a corner version for floor-to-wall connection (joint along the wall). These profiles have an index:

- For external version "EE": SV-EE;
- For internal version "EI": SV-EI (only for joints with a width of 45 mm or more).



Example: SV-EE 24/30/9005

► TECHNICAL DATA

→ FRAME

| | |
|---------------|---|
| Material | Aluminum EN AW 6063 T6 (T66 ⁵) |
| Strength, MPa | $\sigma_b = 205$ (250 ⁵) |
| Tolerances | EN 12020-2:2008 |
| Length, m | 3,0 |
| Tooling | Mounting holes |
| Surface coat | Mill finish (on request: anodized or powder coat) |
| Fasteners | Included (concrete screws RAWLPLUG R-LX-5x50-CS) |

→ FLEXIBLE INSERT⁴

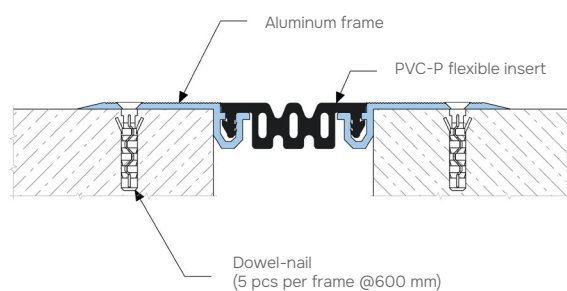
| | |
|--------------------|--|
| Material | PVC-P |
| Resistant | -30...+100 °C, UV+O ₃ – resistant |
| Length, m | 20 meters per roll |
| Color ⁴ | 9005 7035 7037 1015 |

³ On request, the insert can be made in any RAL color (ask for details).

⁴ On request it is possible to manufacture inserts with other geometries (see "Non-standard insert types").

⁵ For EU market

► EQUIPMENT PROFILE



► LABELING

Non-standard insert type
(marked if required – see "Non-Standard Insert types")

SV 24/50/7035/V3

Insert color by RAL

Joint Width

Profile Series:
SV 24 – standard version
SV-EE 24 and SV-EI 24
(marked if required – see "Corner version")