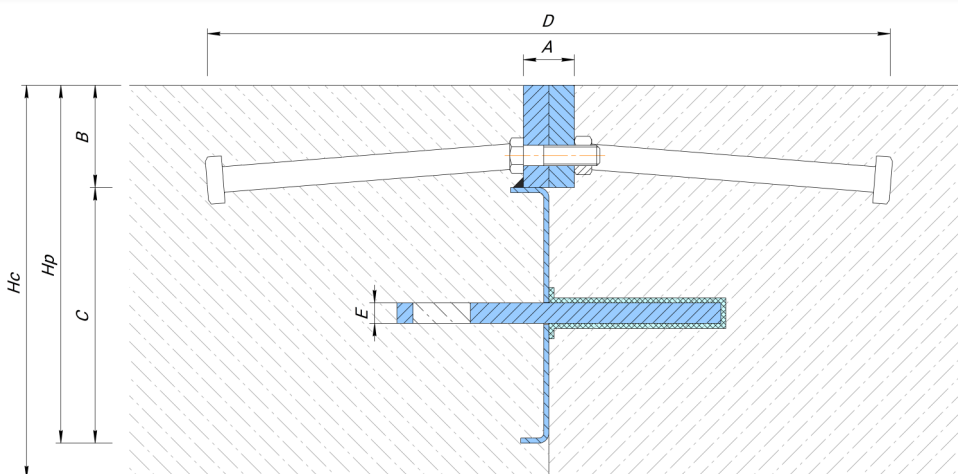
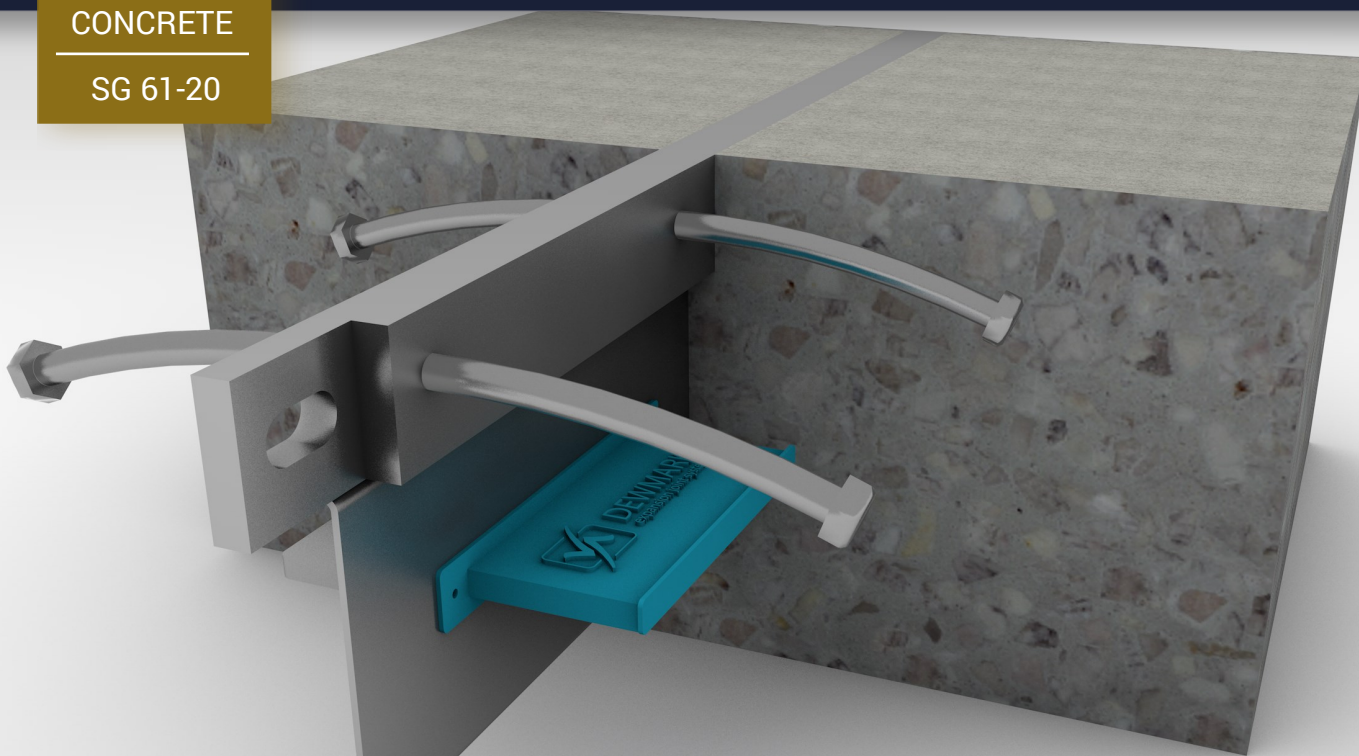




DEWMARK
CONCRETE

SG 61-20



Technical details

MATERIAL
S235J2G3 , ABS plastic

LENGTH
3 meter

COVERING
without protective coating

TREATMENT
Comes assembled

MOVEMENT
Opening of a joint on 25 mm

Profile	Hp (mm)	Hc (mm)	A (mm)	B (mm)	C (mm)	D (mm)	E (mm)	Lu (mm)	Lp (mm)	L (mm)	Weight/ pcs ²
SG 61-20/90	90	100-120	20	40	50	220	8	250	— ¹	3000	20,7
SG 61-20/110	110	125-140	20	60	70	220	8	250	— ¹	3000	22,3
SG 61-20/130	130	145-160	20	80	90	220	8	250	600	3000	31,0
SG 61-20/150	150	165-180	20	100	110	220	8	250	600	3000	32,6
SG 61-20/180	180	185-210	20	130	140	220	8	250	600	3000	34,2
SG 61-20/210	210	215-240	20	160	170	220	8	250	600	3000	35,8
SG 61-20/240	240	245-270	20	190	200	220	8	250	600	3000	37,4
SG 61-20/270	270	275-300	20	220	230	220	8	250	600	3000	39,0

¹ For heights of 90 and 110 mm, the support plates are not fixed.
Completed on request.

² Profile weight is approximate.

³ The use of plastic wheels is not recommended. With high traffic, they will quickly collapse.

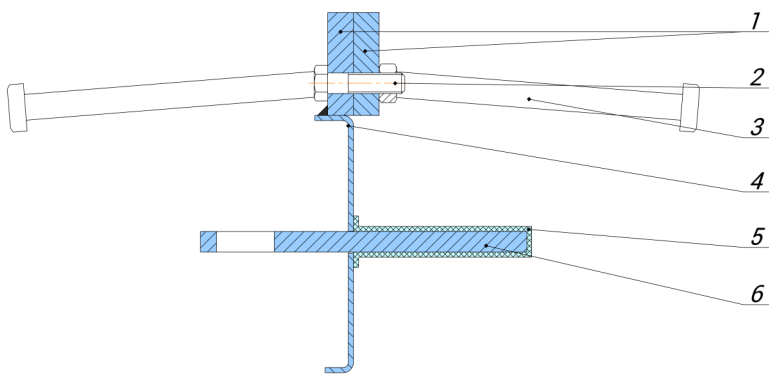
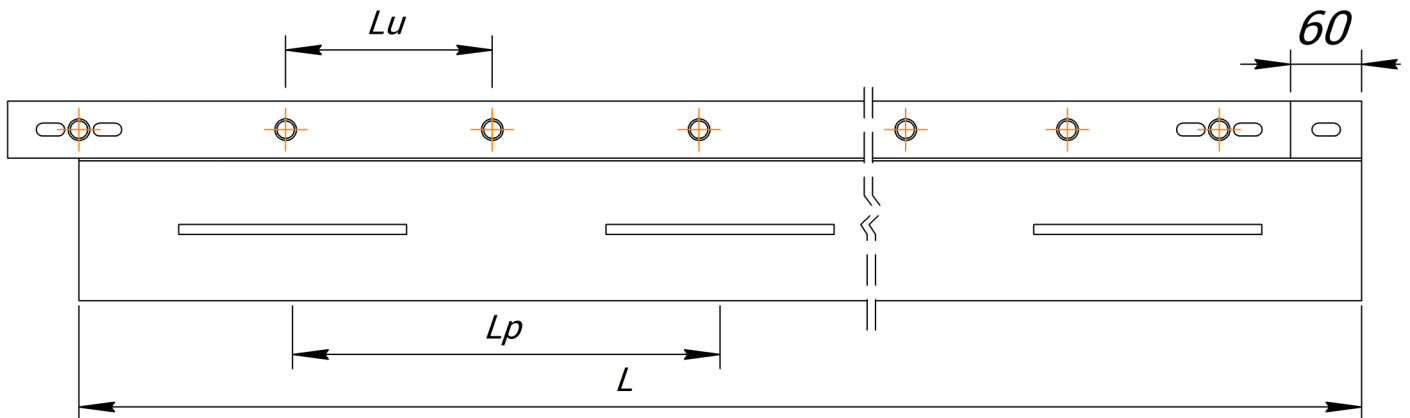
On request

To order the profile can be made:

- Stainless steel AISI 304 (430);
- Hot galvanized profile.
- Steel strips 6x40 (reduced load capacity - request data)

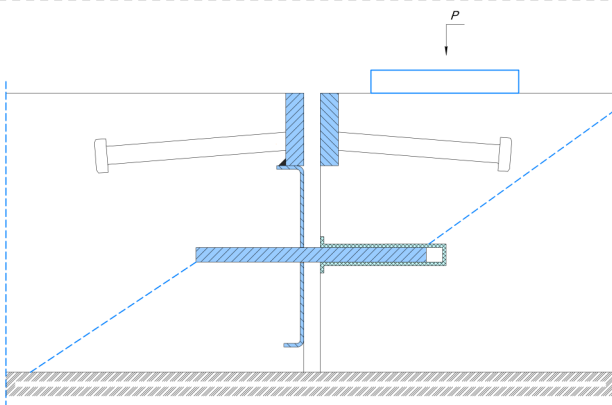
Allowable load

Vehicle type	Allowable weight	Permissible axle load
Car	50 kN	25 kN
Truck	600 kN	110 kN
Pneumatic lift truck	190 kN	110 kN
Plastic Wheel Loader ³	130 kN ³	100 kN ³



Описание	
1	Steel strips 10x40
2	Plastic fasteners
3	Shearconnectors
4	Steel height guide (thickness 3 mm)
5	Plastic casing
6	Base plate

- The distribution of loads between adjacent plates is carried out with the help of embedded high-strength support plates which play the role of dowels, substantially exceeding the standard pin connections. Embedded dowels allow the plates to move relative to each other in a horizontal plane during the shrinking process and with temperature expansions, but limit the vertical movements of the plates.
- Reinforcing rods provide solid anchoring in the concrete slab, preventing rotation or displacement of the strips during the passage of machinery through the seam.
- The unique rivet system ensures that the two bands are at the same level during installation and pouring concrete, and ensures the opening of the seam during shrinkage.
- Increased strength ensures greater flatness and ease of installation.



Load distribution when moving a joint.

The 8-mm-thick 600P-8 base plates, paired with a plastic casing, reliably protect the concrete slabs from bursting in the event of a load.

The geometry of the plates is calculated in such a way that allows the expansion joint to be opened by 25 mm without reducing the strength of concrete slabs.

