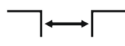




Loads up
to 100 kN



Top
mounted



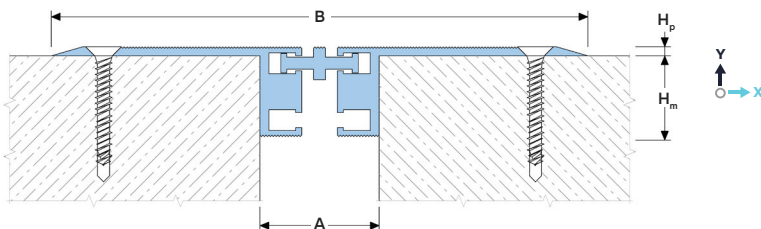
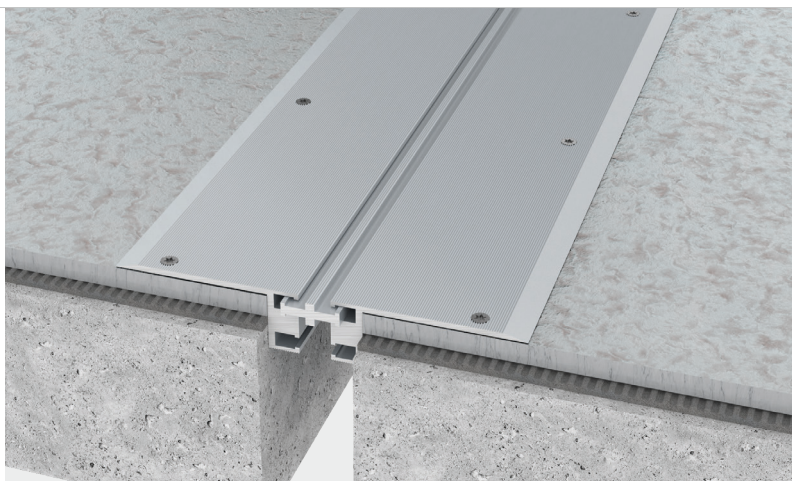
Joint width
up to 55 mm



Movements
in 3 planes



Indoor/
outdoor²



DESIGNATIONS:

A — nominal joint width;
B — visible width;
H_p — profile height;
H_m — installation height;
M_x — horizontal movements;
M_y — vertical movements.

Profile	Sizes, mm				Movements, mm		Permissible loads ¹ (kN)			
	A	B	H _m	H _p	M _x	M _y				
SG 32/40	40	180	27	3	14 (+7/-7)	4 (+2/-2)	50	100	50	—
SG 32/55	55	195	27	3	14 (+7/-7)	4 (+2/-2)	50	100	50	—

¹The profile is suitable for parking lots and similar buildings and is not intended for open areas with free movement of vehicles at speeds exceeding 10 km/h.

²It is not recommended to use the profile under the open rays of the sun and with possible large temperature fluctuations due to the large difference in the coefficients of thermal expansion of concrete and aluminum.

► TECHNICAL DATA

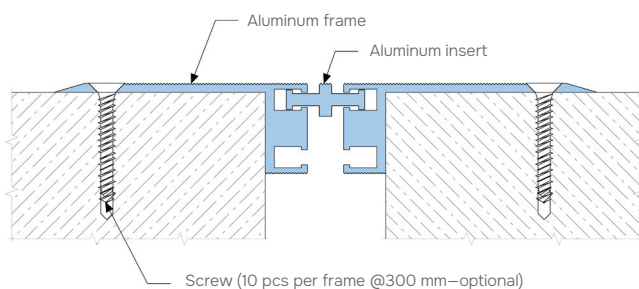
→ FRAME AND INSERT

Material	Aluminum EN AW 6063 T6 (T66 ³)
Strength, MPa	$\sigma_b = 205$ (255 ³)
Tolerances	EN 12020-2:2008
Tooling	Mounting holes
Fasteners	Included (Screws Rawlplug)
Surface coat	Mill finish ⁴
Length, m	3,0

³ For the EU market.

⁴ The profile can be optionally anodized (ask for details).

► EQUIPMENT PROFILE



Screw (10 pcs per frame @300 mm—optional)

► CORNER VERSION

Profiles have corner versions for Floor-to-wall connections (joint along the wall). These profiles have an index "E": SG-E.

