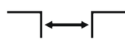




Top
mounted



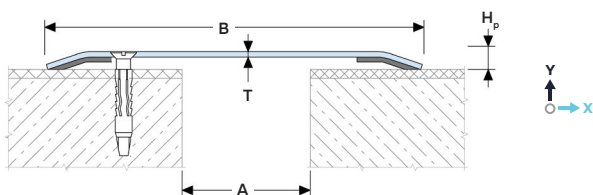
Joint width
10-500 mm



Movements
in 2 directions



Indoor/
outdoor



DESIGNATIONS:

A – nominal joint width;

B – visible width;

H_p – profile height;

T – thickness;

M_x – horizontal movements;

M_y – vertical movements.

| Profile | Cover type | Sizes, mm | | | | Movements, mm | |
|-----------|--------------|----------------|-----|----------------------------------|----------------|-----------------------------|-----------------------------|
| | | A ¹ | B | T | H _p | M _x ¹ | M _y ² |
| AV 16/70 | AL / SS / BR | 10-15 | 70 | 1,5 ³ /2 ³ | 5 | 20 (+5/-15) | — |
| AV 16/100 | AL / SS / BR | 20-35 | 100 | 1,5 ³ /2 ³ | 5 | 42 (+7/-35) | — |
| AV 16/120 | AL / SS / BR | 40-50 | 120 | 1,5 ³ /2 ³ | 5 | 60 (+10/-50) | — |
| AV 16/150 | AL / SS / BR | 50-75 | 150 | 1,5 ³ /2 ³ | 5 | 90 (+15/-75) | — |
| AV 16/200 | AL / SS / BR | 80-120 | 200 | 1,5 ³ /2 ³ | 5 | 140 (+20/-120) | — |
| AV 16/250 | AL / SS / BR | 120-165 | 250 | 1,5 ³ /2 ³ | 5 | 100 (+25/-165) | — |
| AV 16/300 | AL / SS / BR | 170-200 | 300 | 1,5 ³ /2 ³ | 5 | 150 (+40/-130) | — |

¹The maximum allowable movements are indicated for the largest expansion joint opening. When using a profile with a different opening of the expansion joint "A", the magnitude of the movements changes proportionally. For example, for a profile AV 16/150 with a joint opening of 60 mm, the movement will be 90 (+30/-60).

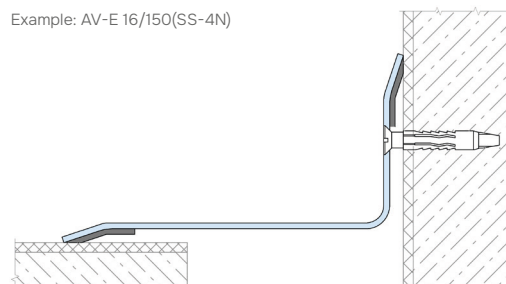
²M_y movements are not recommended.

³For aluminum the thickness is 2 mm, for stainless steel and brass the thickness is 1.5 mm.

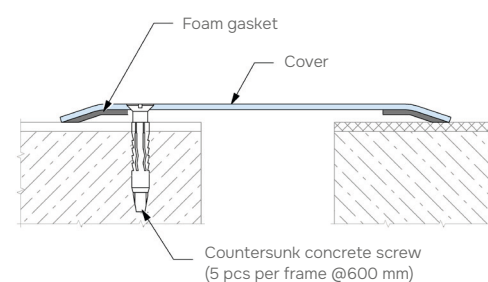
► CORNER VERSION

All profiles have corner versions for floor-to-wall connections (joint along the wall). These profiles have an "E" index: AV-E.

Example: AV-E 16/150(SS-4N)

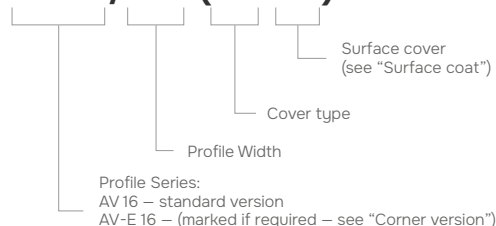


► EQUIPMENT PROFILE



► LABELING

AV 16/120 (AL-XX)



► TECHNICAL DATA

→ COVER

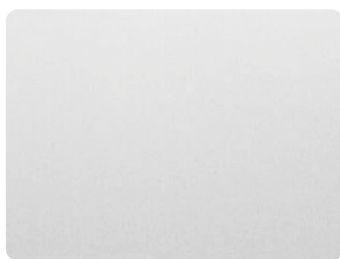
The profile is made to order from various materials to choose from:

| Material | Aluminum (5052-H34) | AISI 304 (1.4301) | Brass |
|---------------------|---|---|---|
| Profile designation | AL-XXXX XXXX – RAL color | SS304-XX XX – steel surface | BR-XX XX – brass surface |
| Strength, MPa | σ _b =180 | σ _b =515 | σ _b =330 |
| Tolerances | EN 1090-3 | EN 1090-2 | EN 1090-2 |
| Length, m | 3,0 | 3,0 | 3,0 |
| Tooling | Mounting holes | Mounting holes | Mounting holes |
| Fasteners | Included (Dowel-nail) | Included (Dowel-nail) | Included (Dowel-nail) |
| Surface coat | Mill finish/Anodized On request: powder coated in RAL color or anodized in various colors (ask for details). | Standard surface se- lection: grind/brushed/ polished/textured On request (see "Surface types"): • Colored stainless steel; • Textured stainless steel. | Various brass variants (ask for details) |

► ALUMINIUM FINISHES



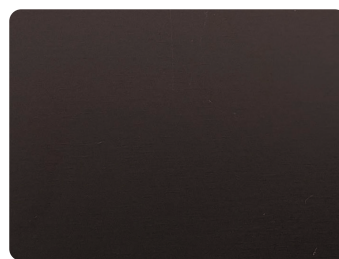
Mill Finish (MF)



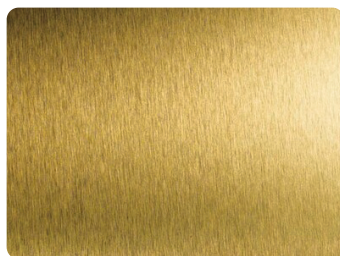
Silver (SA)



Champagne (CA)



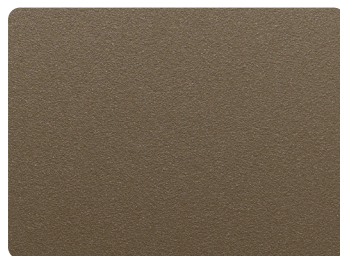
Dark Bronze (DBRA)



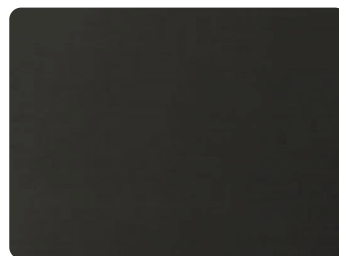
Gold (GA)



Light bronze (LBRA)



Bronze (BRA)



Black (BLA)

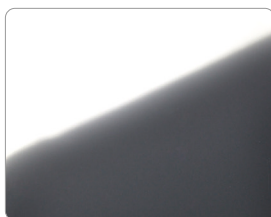


On request, it is possible to create various patterns and inscriptions on the aluminum surface by means of decorative anodizing, which increases the visual perception of the profile many times over. Please ask for more information.

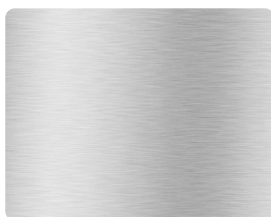
► STAINLESS STEEL FINISHES



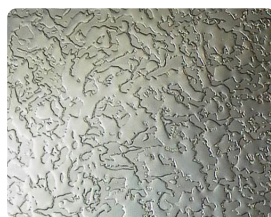
Matt (2B)



Mirror (BA)



Polish (4N)



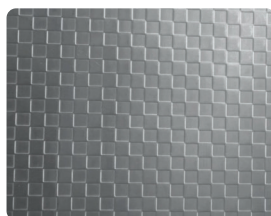
Ice



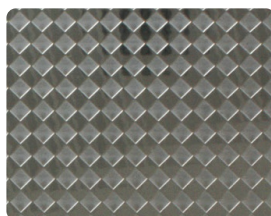
Sand



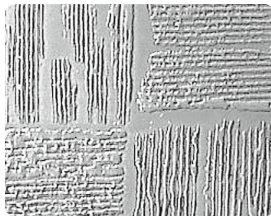
Lether



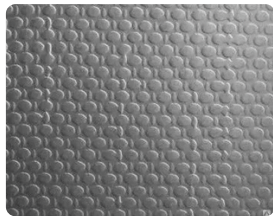
Square



Rhombus



Chessboard



Linen



Rings

► POWDER COATING FINISHES



Profiles can be powder coated in RAL colors, as well as painted with textured surface with inclusions of different colors. See more at dewmark-joint.com/finishes



SCAN FOR MORE