



DEWMARK
HYDRO

WR 71/100



Joint width
100 mm



Recess
mounted



Max load
300 kN



Movements in
6 directions



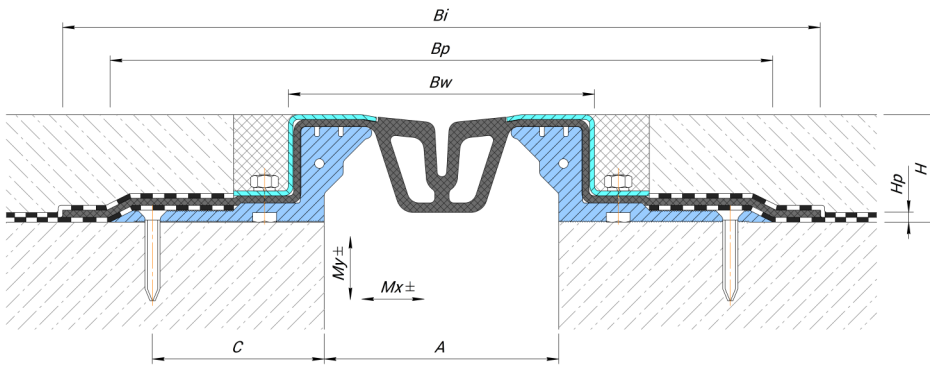
Protection
rating IP 67



Indoor/
outdoor



FLOOR COVERING → TILE → POLYMER → CONCRETE



Technical data

MATERIAL

Profile: aluminium EN AW 6060T6
Plates: AISI 430 (AISI 304 or 316 to order)
Insert (shirt): PVC-P (oil and petrol resistant)

LENGTH

Profile: 2.5 meters
Plates: 2.5 meters
Insert: 25 meters

STANDARD COLOR OF INSERT (RAL)

9005

Profile	A (mm)	H (mm)	Bw (mm)	Bp (mm)	Bi (mm)	C (mm)	Hp (mm)	Mx (mm)	My (mm)	Load bearing capacity, kN			
WR 71/100/45	100	45	130	280	430	70	4	80 (+40/-40)	20 (+10/-10)	50	300	70	—

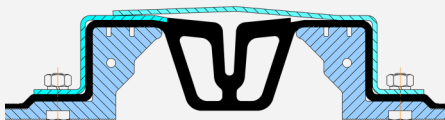
Bi - Visible width of the flexible insert. Can be trimmed in place to the required width.

On request

Other profile heights on request.

The profile can be completed with an capping the insert to protect against mechanical damage (this profile will have an index F).

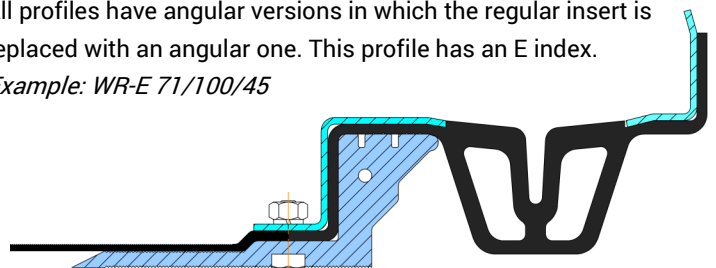
Example: WR 71/100/45 F



Corner Versions

All profiles have angular versions in which the regular insert is replaced with an angular one. This profile has an E index.

Example: WR-E 71/100/45



NOTE!

! The specified IP rating is applicable if the waterproofing of the floor is matched with profile aprons.

! If there is a vertical movement using the lining "F" are not allowed.

! By agreement, it is possible to use asphalt in the finish coating.

Profile assembly

The profile is supplied complete with mounting brackets by the joint width.

