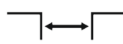




Top
mounted



Joint width
25-100 mm



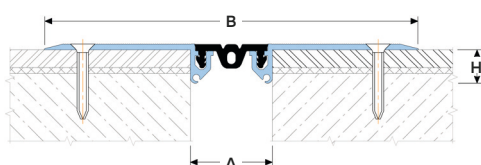
Movements
in 6 planes



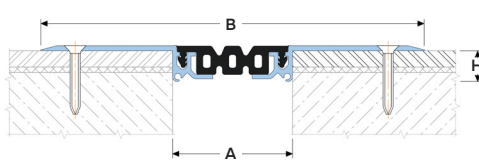
Indoor/
outdoor³



For joints with widths from 25 to 45 mm



For joints with widths from 50 to 100 mm



DESIGNATIONS:

A – nominal joint width;
B – visible width;
H – installation height;
 M_x – horizontal movements;
 M_y – vertical movements.

Profile	Sizes, mm			Movements, mm		Permissible loads (kN)			
	A	B	C	M_x	M_y				
SV 22/25	25	150	15	4 (+2/-2)	4 (+2/-2)	30 ^{1,2}	—	—	—
SV 22/30	30	155	15	6 (+3/-3)	6 (+3/-3)	30 ^{1,2}	—	—	—
SV 22/35	35	160	15	10 (+5/-5)	10 (+5/-5)	30 ^{1,2}	—	—	—
SV 22/45	45	170	15	12 (+6/-6)	12 (+6/-6)	30 ^{1,2}	—	—	—
SV 22/50	50	175	15	16 (+8/-8)	16 (+8/-8)	30 ^{1,2}	—	—	—
SV 22/55	55	180	15	20 (+10/-10)	20 (+10/-10)	30 ^{1,2}	—	—	—
SV 22/70	70	195	15	24 (+10/-14)	24 (+12/-12)	30 ^{1,2}	—	—	—
SV 22/100	100	225	15	30 (+14/-16)	30 (+15/-15)	30 ^{1,2}	—	—	—

¹ Not for permanent use (approval required) - high loads can lead to shearing of countersinks and failure of fasteners.

² High traffic intensity is not recommended, choose profiles from the Dewmark Heavy, Hydro or Metall series.

³ It is not recommended to use the profile in the open sunlight and with possible large fluctuations in temperature due to the large difference in the coefficients of thermal expansion between concrete and aluminium.

► TECHNICAL DATA

→ FRAME

Material	Aluminum EN AW 6063 T6 (T66 ⁶)
Strength, MPa	$\sigma_b = 205$ (250 ⁶)
Tolerances	EN 12020-2:2008
Length, m	3,0
Tooling	Mounting holes
Surface coat	Mill finish (on request: anodized or powder coat)
Fasteners	Included (concrete screws RAWLPLUG R-LX-5x50-CS)

→ FLEXIBLE INSERT⁵

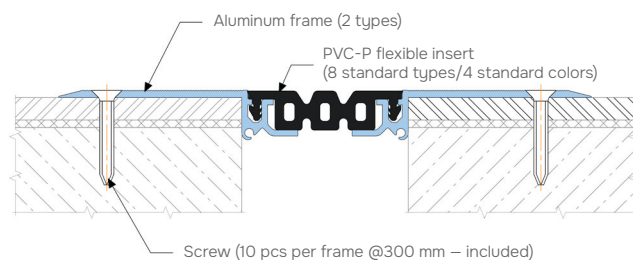
Material ⁶	PVC-P
Resistant	-30...+100 °C, UV+O ₃ – resistant
Length, m	20 meters per roll
Color ⁵	<div>9005</div> <div>7035</div> <div>7037</div> <div>1015</div>

⁵ On request, the insert can be made in any RAL color (ask for details).

⁶ On request it is possible to manufacture inserts with other geometries (see "Non-standard insert types").

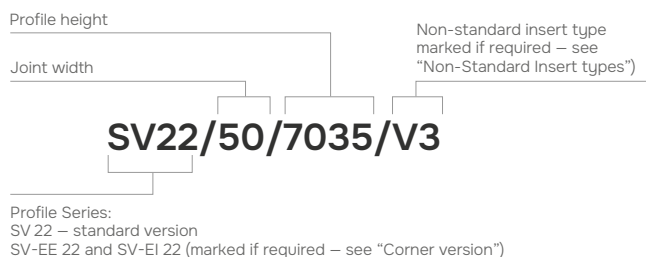
⁷ For EU market

► EQUIPMENT PROFILE



► LABELING

(example)



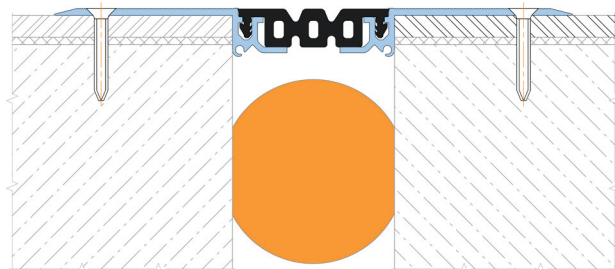
► EXECUTION OPTIONS



Using a moisture barrier for waterproofing an expansion joint.

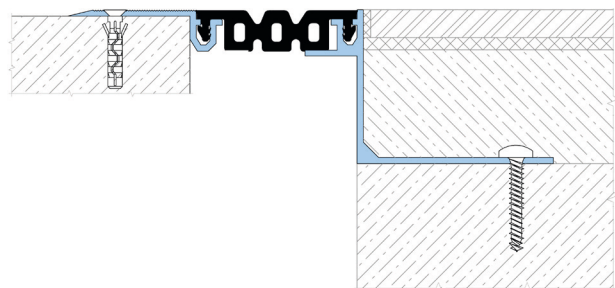


Use of a fire barrier with a fire resistance rating of up to EI 240.

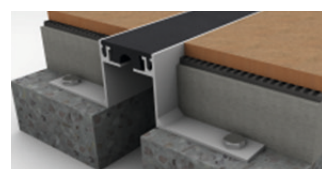


Recess - top mounted profile version (SV 21-22).

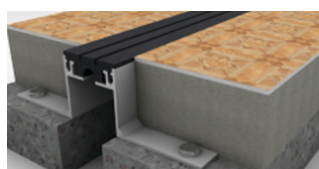
Example: SV 21-22/50/50/9005



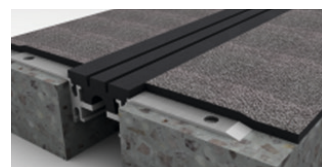
► NON-STANDARD TYPES



Flat insert
(index "F")



Insert with height increased by 3 mm
(index "V3")

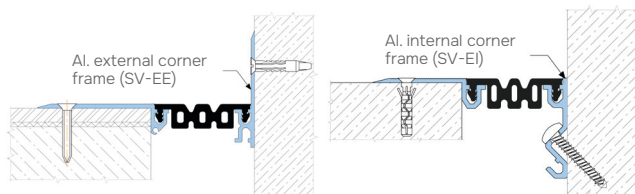
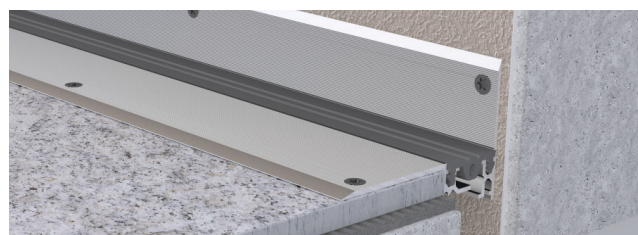


Insert with height increased by 5 mm
(index "V5")

► CORNER VERSION

Profiles have corner versions for Floor-to-wall connections (joint along the wall). These profiles have an index:

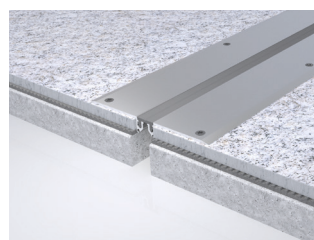
- For external version "EE": SV-EE;
- For internal version "EI": SV-EI (only for joints with a width of 45 mm).



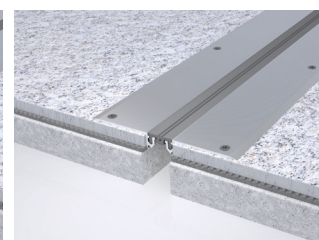
Example: SV-EE 22/30/9005

Example: SV-EI 22/50/9005

► STANDARD INSERT TYPES



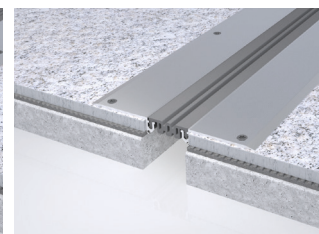
For 25 mm



For 30 mm



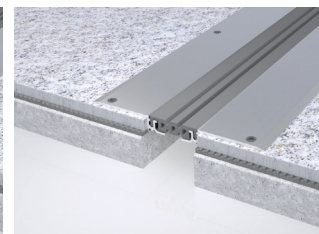
For 35 mm



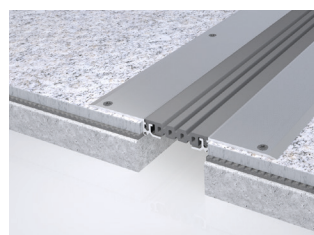
For 45 mm



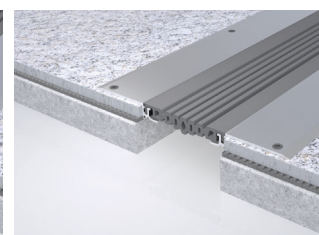
For 50 mm



For 55 mm



For 70 mm



For 100 mm