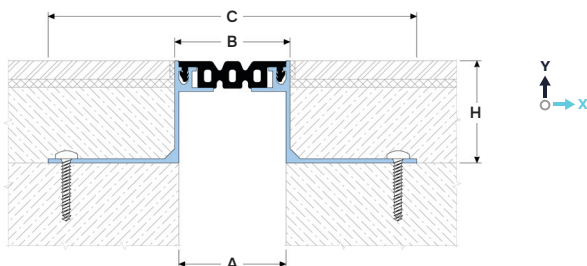


Movements  
in 6 planes



Indoor/  
outdoor



#### DESIGNATIONS:

A – nominal joint width;  
B – visible width;  
C – width seat;

H – installation height;  
 $M_x$  – horizontal movements;  
 $M_y$  – vertical movements.

Profile	Sizes, mm				Movements, mm		Permissible loads (kN)			
	A	B	C	H <sup>1</sup>	$M_x$	$M_y$				
SV 21/20/... <sup>1</sup>	20	25	150	15 / 20 / 30 / 50 / h <sup>2</sup>	4 (+2/-2)	4 (+2/-2)	30 <sup>3,4</sup>	100 <sup>3,4</sup>	50 <sup>3,4</sup>	—
SV 21/25/... <sup>1</sup>	25	30	155	15 / 20 / 30 / 50 / h <sup>2</sup>	6 (+3/-3)	4 (+2/-2)	30 <sup>3,4</sup>	100 <sup>3,4</sup>	50 <sup>3,4</sup>	—
SV 21/30/... <sup>1</sup>	30	35	160	15 / 20 / 30 / 50 / h <sup>2</sup>	10 (+5/-5)	4 (+2/-2)	30 <sup>3,4</sup>	100 <sup>3,4</sup>	50 <sup>3,4</sup>	—
SV 21/40/... <sup>1</sup>	40	45	165	15 / 20 / 30 / 50 / h <sup>2</sup>	12 (+6/-6)	4 (+2/-2)	30 <sup>3,4</sup>	100 <sup>3,4</sup>	50 <sup>3,4</sup>	—
SV 21/45/... <sup>1</sup>	45	50	170	15 / 20 / 30 / 50 / 70 / 80 / 100 / h <sup>2</sup>	16 (+8/-8)	4 (+2/-2)	30 <sup>3,4</sup>	100 <sup>3,4</sup>	50 <sup>3,4</sup>	—
SV 21/50/... <sup>1</sup>	50	55	175	15 / 20 / 30 / 50 / 70 / 80 / 100 / h <sup>2</sup>	20 (+10/-10)	4 (+2/-2)	30 <sup>3,4</sup>	100 <sup>3,4</sup>	50 <sup>3,4</sup>	—
SV 21/65/... <sup>1</sup>	65	70	190	15 / 20 / 30 / 50 / 70 / 80 / 100 / h <sup>2</sup>	24 (+10/-14)	4 (+2/-2)	30 <sup>3,4</sup>	100 <sup>3,4</sup>	—	—
SV 21/100/... <sup>1</sup>	100	105	220	15 / 20 / 30 / 50 / 70 / 80 / 100 / h <sup>2</sup>	30 (+14/-16)	4 (+2/-2)	30 <sup>3,4</sup>	—	—	—

<sup>1</sup>... – installation height to choose from standard (see H).

<sup>2</sup>Mounting height of the profile on request, where "h" is a value in mm (selectable in the range from 50 to 200 mm), designated by the SV-H index (see "execution options" #3).

<sup>3</sup>Not for permanent use for heights from 15 to 30 mm (approval required) – at high loads, cracking of the finish coating over the profile is possible.

<sup>4</sup>High traffic intensity is not recommended, choose profiles from the Dewmark Heavy, Hydro or Metal series.

## ► TECHNICAL DATA

### → FRAME

Material	Aluminum EN AW 6063 T6 (T66 <sup>7</sup> )
Strength, MPa	$\sigma_b = 205$ (250 <sup>7</sup> )
Tolerances	EN 12020-2:2008
Length, m	3,0
Tooling	Perforated holes
Surface coat	Mill finish
Fasteners	Included

### → FLEXIBLE INSERT<sup>6</sup>

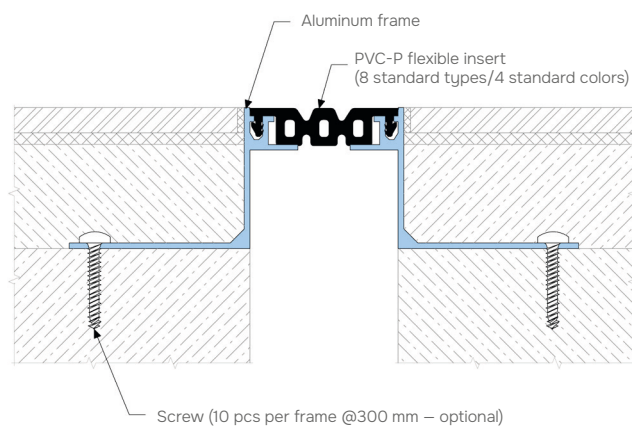
Material	PVC-P
Resistant	-30...+100 °C, UV+O <sub>3</sub> – resistant
Length, m	20 meters per roll
Color <sup>5</sup>	<div style="display: flex; gap: 10px;"> <div style="background-color: black; color: white; padding: 2px 5px;">9005</div> <div style="background-color: gray; color: white; padding: 2px 5px;">7035</div> <div style="background-color: gray; color: white; padding: 2px 5px;">7037</div> <div style="background-color: yellow; color: black; padding: 2px 5px;">1015</div> </div>

<sup>5</sup>On request, the insert can be made in any RAL color (ask for details).

<sup>6</sup>On request it is possible to manufacture inserts with other geometries (see "Non-standard insert types").

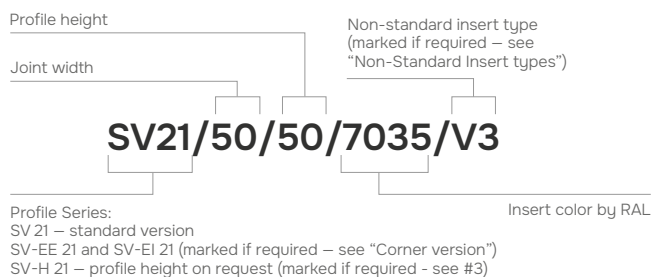
<sup>7</sup>For EU market

## ► EQUIPMENT PROFILE



## ► LABELING

(example)



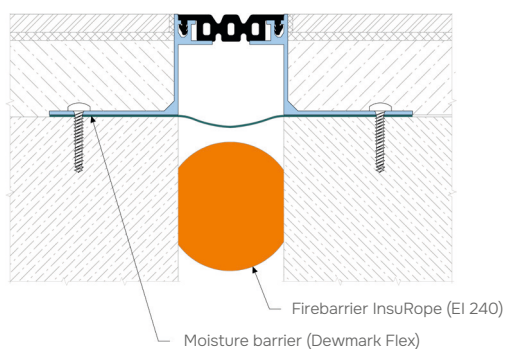
## ► EXECUTION OPTIONS



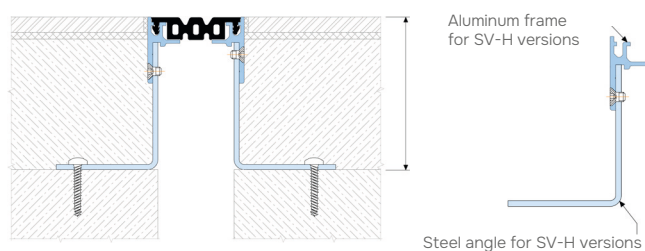
Using a moisture barrier for waterproofing an expansion joint.



Use of a fire barrier with a fire resistance rating of up to EI 240.

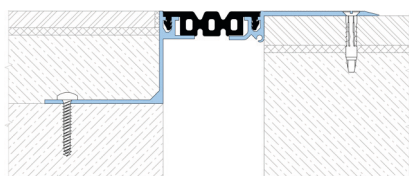


The profile can be made to order for the required height from 50 to 200 mm. In this case, it is completed with an assembled frame consisting of an aluminum guide and a steel angle.



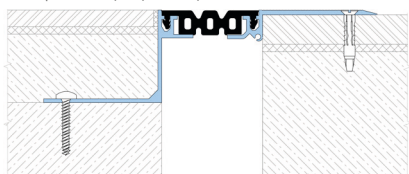
Recess - top mounted profile version (SV 21-22).

Example: SV 21-22/50/50/9005



Different height version of the profile.

Example: SV 21/50/50-20/9005

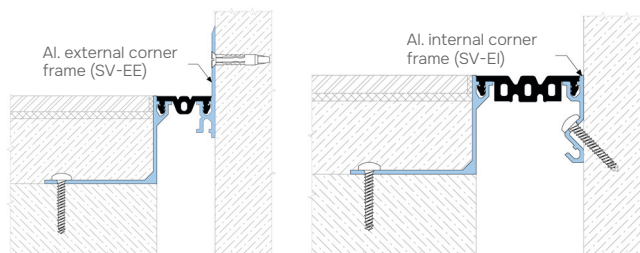


## ► CORNER VERSION

Profiles have corner versions for Floor-to-wall connections (joint along the wall).

These profiles have an index:

- For external version "EE": SV-EE;
- For internal version "EI": SV-EI (only for joints with a width of 45 mm).



Example: SV-EE 21/30/50/9005

Example: SV-EI 21/50/50/9005

## ► INSERT TYPES

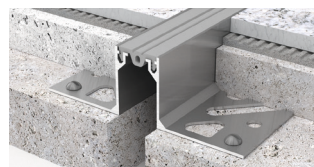
### → STANDART



For 20 mm



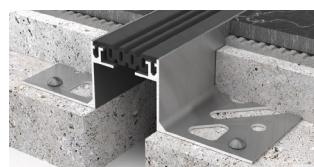
For 25 mm



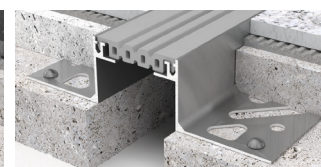
For 30 mm



For 40 mm

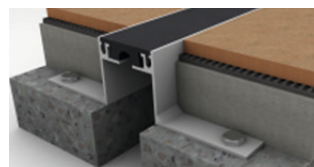


For 50 mm

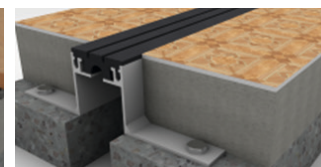


For 65 mm

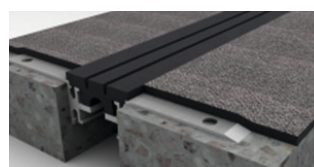
### → NON-STANDARD



Flat insert  
(index "F")



Insert with height increased by 3 mm  
(index "V3")



Insert with height increased by 5 mm  
(index "V5")