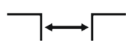




Max load
300 kN



Top
mounted



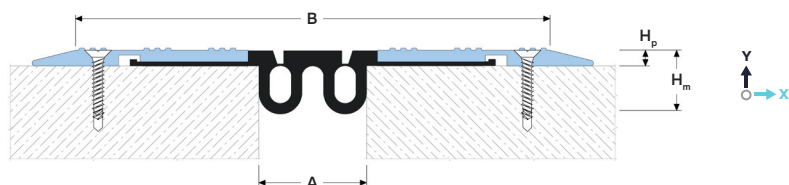
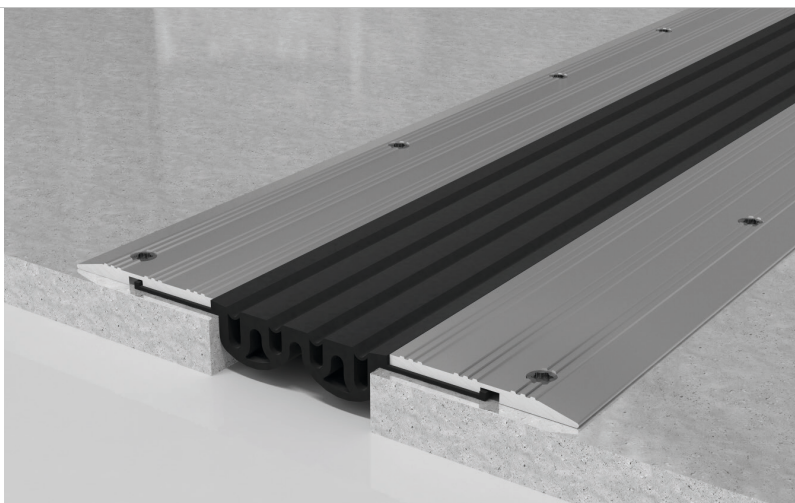
Joint width
20-100 mm



Movements
in 6 directions



Indoor/
outdoor²



DESIGNATIONS:

A – nominal joint width;
B – visible width;
H_p – profile height;

H_m – installation height;
M_x – horizontal movements;
M_y – vertical movements.

Profile	Sizes, mm				Movements, mm		Permissible loads (kN)			
	A	B	H _p	H _m ¹	M _x	M _y				
WR 76/20	20	230	7,3	20	20 (+10/-10)	20 (+10/-10)	50	300	70	—
WR 76/30	30	240	7,3	15	25 (+15/-10)	20 (+10/-10)	50	300	70	—
WR 76/50	50	260	7,3	20	30 (+15/-15)	20 (+10/-10)	50	300	70	—
WR 76/70	70	280	7,3	20	35 (+20/-15)	20 (+10/-10)	50	300	—	—
WR 76/100	100	310	7,3	25	40 (+20/-20)	20 (+10/-10)	50	300	—	—

¹ Profile can be equipped with a flat insert, which is not buried in the expansion joint. In this case, possible movements are reduced (see "Flat Insert"). Please ask for more information.

² It is not recommended to use the profile in the open sunlight and with possible large fluctuations in temperature due to the large difference in the coefficients of thermal expansion between concrete and aluminium.

► TECHNICAL DATA

→ COVER

Material	Aluminum 6063 T6 (T66 ³)
Strength, MPa	$\sigma_b = 205$ (250 ³)
Tolerances	EN 12020-2:2008
Length, m	3
Tooling	Countersunk head mounting holes
Fasteners	Included (Screws Rawlplug R-LX-5x50-CS)
Finish	Mill finish

→ INSERT

Material	PVC-P-BV
Profile designation ⁴	-30...+100 °C, UV+O ₃ +Bitum – resistant
Strength, MPa	20 meters per roll
Tolerances	Black ⁴

³ For EU market.

⁴ On request, the insert can be made in any RAL color (ask for details).

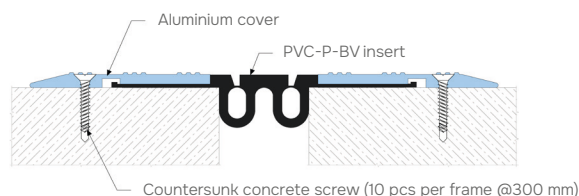
► LABELING

WR 76/50

Profile Series:
WR 76 – standard version
WR-E 76 (marked if required – see "Corner version")

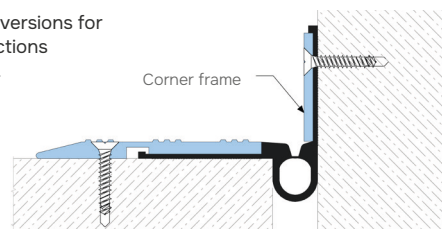
Joint Width
(If a flat insert is used
is marked with "F")

► EQUIPMENT PROFILE



► CORNER VERSION

Profiles have corner versions for
Floor-to-wall connections
(joint along the wall).



► FLAT INSERT

